

MARCH 2016

Killearn Kloverleaf

Killearn Estates Community Magazine



Board of Directors— Monthly Meeting

The Killlearn Homes Association Board of Directors' monthly meetings are scheduled for **the first Tuesday of the month at 7 pm in the Conference room of the Association office located at 2705 Killarney Way, unless noted below****. All Killlearn property owners and residents are requested and welcomed to attend our monthly meeting and participate in our neighborhood's activities. The agenda for the upcoming meeting will be posted on our website and our facebook page.



Any change to the scheduled date and/or time will be posted on our web site at www.killlearn.org.

The planned scheduled dates of the Board of Directors' future meetings

April 5, 2016
May 3, 2016
June 7, 2016

July 12, 2016 (2nd Tuesday due to 4th of July)
August 2, 2016
September 6, 2016
October 4, 2016
November 1, 2016 (Annual Meeting)
December 6, 2016
January 3, 2017

KHA Office Hours and Scheduled Holidays

Your Association's staff is available Monday through Friday from 8:30 am to 4:00 pm.



The office will be closed for the following holidays:

May 30, 2016 Memorial Day
July 4 & 5, 2016 Fourth of July
September 5, 2016 Labor Day
November 11, 2016 Veteran's Day
November 24 & 25, 2016 Thanksgiving
Dec 23 & 26, 2016 Christmas
January 2, 2017 New Year's Day

FOOD TRUCK WEDNESDAY AT FOUR OAKS COMMUNITY CHURCH



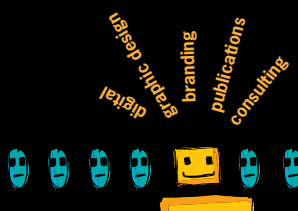
With the weekend around the corner, and two days left in the week, why not stop by with the family, between 5 and 8pm and leave the cooking to someone else?

Visit their facebook page, Food Truck Wednesday, for that week's vendors.

GREAT MINDS
A CREATIVE GROUP

850-386-7401

www.greatmindsinc.com





BOARD OF DIRECTORS

John Paul Bailey
President

Michael Flemming
Vice President

David Ferguson
Secretary

Phil Inglese
Treasurer

Philip Doyle

Gloria M. Arias

Lynda Kinard

Bill Schack

Cedrick Foster

Bob Ippolito
President Emeritus

ASSOCIATION STAFF

LeAnn Sbordone
Executive Director

Sue Barlow
Office Manager

Joy Dowdy
Field Manager

Vicki Hoffman
Financial Assistant

PUBLISHER

Killlearn Homes Association

EDITOR

Sue Barlow

GRAPHIC DESIGN

Debbie Dewell, Great Minds, Inc.

ADVERTISING

850/893-3468
kha@killlearn.org

AD DESIGN

850/386-7401
debbie@greatmindsinc.com

ASSOCIATION OFFICE

Killlearn Kloverleaf™ is published monthly
(12 issues/yr.)

by Killlearn Homes Association
2705 Killarney Way,
Tallahassee FL 32309
850/893-3468 FAX 850/668-0530

POSTMASTER: Send address changes to:
Killlearn Homes Association
2705 Killarney Way
Tallahassee FL 32309

Copyright © 2016. All rights reserved.



Friend us on facebook
to keep up with daily
neighborhood news,
photos and more!

Message executive director



Making Decisions ...

Here in Florida, statutes govern a multitude of operations necessary for many types of residential associations, including those for homeowner, condominium, timeshare, and mobile home communities. These statutes regulate everything from how to apply delinquent dues payments to the process for filling board vacancies to the procedures for having meetings – and the list goes on.

Homeowner associations such as KHA are governed specifically by Florida Statute Chapter 720 (Homeowners Association Act) and Chapter 617 (Corporations Not For Profit), in addition to a variety of other laws, including those that govern landlords and tenants, health codes, pool operations, collections, clean energy, deeds and titles, playground safety, building codes, etc. We're also governed by an entire host of city and county ordinances.

Additionally, Florida is one of only nine states that requires licensing for community managers. Here in the KHA office, you have two such licensed community association managers (CAMs) – myself and Sue Barlow, our office manager – tracking roughly 25 bills that were introduced during Florida's 2016 legislative session that would amend those very laws we are governed by. A few of the more notable bills worth mentioning are:

- **HB 667:** would combine the separate statutes for homeowner, condominium, and timeshare associations into a single Common Interest Community Act.
- **HB 7031:** would exclude community association covenants and restrictions from the Marketable Records Title Act.
- **SB 406:** would establish a state certified playground safety inspector program along with playground safety standards.

To ensure KHA is always in compliance, we will continue to monitor the progress of these bills not only during this session, but also in future sessions.

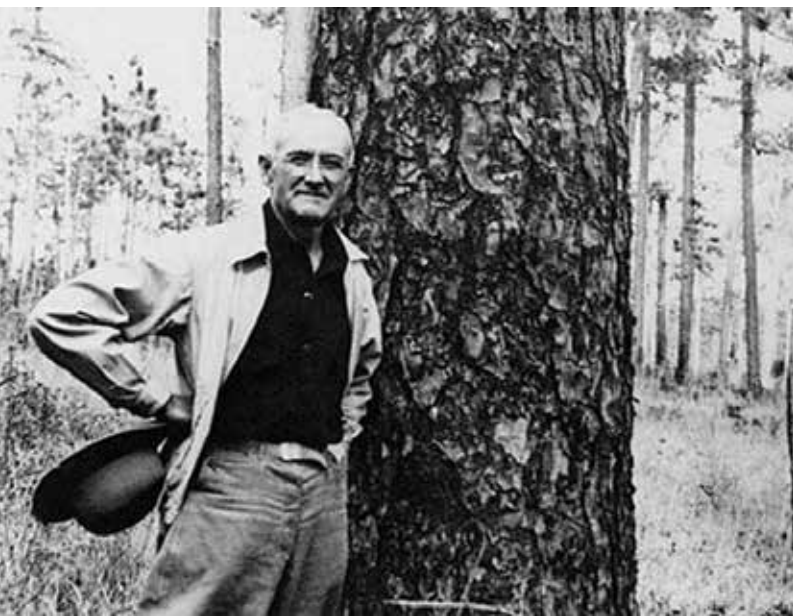
On a more local level, we are keeping an eye on the proposed extensions of Welaunee Blvd. and Shamrock Street that would run through the Welaunee Plantation land located on the other side of Centerville Road. By the time this publication hits your mailbox, I will have attended a Blueprint 2000 Intergovernmental Agency meeting at which this topic will be discussed. Keep your eyes and ears open for the results of that meeting and for dates and times of future meetings.

LeAnn Sbordone

Killearn Estates Plantation, the Birthplace of **Modern Forest** **ecology**

The Killearn Chain of Lakes were first mapped by Europeans in 1825, a year after Tallahassee became the only incorporated city in Leon County.

They are clearly recognizable. Lake Killearney was called Turkey Lake, probably because of the good hunting. In 1850 there were several large plantations in the area. In 1923, Alfred Barmore Maclay consolidated much of the property into one estate, The Killearn Plantation and Gardens. In 1953, Maclay's heirs gave the Killearn Gardens (307 acres including the Maclay house) as a memorial, called the Alfred B. Maclay Gardens State Park. While the few buildings



associated with the plantation were constructed in the first decade of the 20th century, most of the land was a vast hunting plantation. In 1964 this 'hunting estate', along with land deeded from Velda Farms, became Killearn Estates, Tallahassee's first planned community or subdivision.

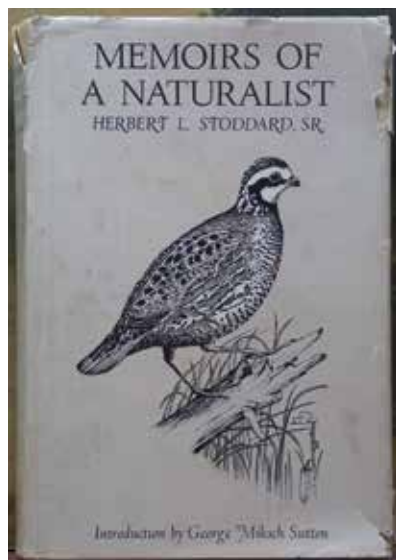
This noble beginning is only part of the story. Killearn Estates Plantation (as it was called prior to being incorporated as Killearn Estates in 1964) is the birth-

place of modern forestry science. This natural area in the center of the fabled Red Hills was prized for its superb wildlife habitats, particularly native birds like turkey and quail. The land was maintained as hunting plantations for the rich, of which Alfred B. Maclay was one. He did not clear the land for agriculture or development, but used it as his private hunting estate. The forests of the Red Hills were prized by the property owners, particularly for quail hunting. The history of the 20th century in the Red Hills has been termed a transition period from "cotton to quail."

However, as time passed the bounty and magnitude of the hunt diminished. The landowners did not know why they found less of the elusive quail in their forests. Maclay's genius was to hire a young biologist named Herbert L. Stoddard to fix this problem and restore his hunting to its former glory. Stoddard, soon heralded as the "Father of Wildlife Management," realized that success of the wildlife depended on fire. Starting in the 1930s, Herbert Stoddard became the consulting land manager for Maclay's vast hunting estate between Tallahassee and Thomasville, Killearn Plantation, which eventually became Maclay State Gardens and Killearn Estates. Your homeowners association is the oldest and largest in Tallahassee and Leon County. The Long Leaf pine and wiregrass habitat was promoted and supported by natural fires. Without fires, the habitat suffered and the wildlife went elsewhere.

So, in an area where fire was suppressed, Herbert Stoddard started burning. Unfortunately, if fire is removed, our southern pinewoods quickly lose the great diversity of plant and animal life they support, including Bobwhite quail, the popular game species hunted throughout the Red Hills. "Stoddard was among the first to suggest that the government was wrong," notes Albert Way, author of *Conserving Southern Longleaf: Herbert Stoddard and the Rise of Ecological Land Management*. "Stoddard recognized that the longleaf-wiregrass ecosystem in particular had evolved in concert with frequent fire, and he argued that fire should be harnessed as a tool of ecological management. "He carefully picked conditions where moisture and wind would produce a small, cool burn that tended to clear out the undergrowth of hardwoods, leaving a forested prairie of native wiregrass and long leafed pine. The

fire cleared out the undergrowth of hardwoods. This cover had allowed predators to encroach on the nests of the quail. He restored perfect quail habitat. Killearn Estates Plantation was where Stoddard developed the techniques of fire ecology. The first controlled burn was successfully used here to maintain wildlife habitats, making Killearn Estates Plantation the birthplace of modern forest ecology. His book, *The Bobwhite Quail: Its Habits, Preservation, and Increase*, written in 1931, is considered the "foundational text" for the field of wildlife management and is still referred to as "The Quail Bible." Stoddard later expanded his ideas of forest management with fire ecology to become the co-founder of Tall Timbers Research Institute. He eventually wound up working all over the Southeastern United States. His innovative technique of wildlife management and fire ecology are used all over the



world and Killearn Estates Plantation is where it began.

Much of this area is preserved as wildlife habitat, and it is estimated that the Red Hills region is worth over \$1.1 billion annually in critical natural services. The Red Hills has been designated by the Nature Conservancy as one of "America's Last Great Places." And while many plantations near Tallahassee succumbed to development, this is the place, Killearn Estates, where it all began, here in your neighborhood, possibly where your house sits.

The joy of quail hunting is perhaps best expressed by former president Jimmy Carter who recalls "I remember that first quail. I was ten years old, hunting alone with my bird dog and my bolt-action .410 and I was so excited when that bird fell I ran all the way home to show it to my daddy. After suitable admiration, he asked 'Where's your gun?' It took three days to find where I had thrown it down in my excitement!"

Re-introducing you to the outdoors...

Patios • Landscape • Walkways • Decks • Gazebos & Pergolas
Fire Pits & Fire Places • Outdoor Kitchens • Drainage & Erosion
Retaining Walls • Design Plans



FIELDER & ASSOCIATES
LANDSCAPE CONTRACTORS
DESIGN • BUILD

www.fielderlandscapes.com • 850-224-LAND (5263) • Over 20 Years of Experience • Financing Available



Prism™ TV

replaces cable and satellite.

Killearn Estates, this is the future of TV.



CenturyLink® Prism™ TV: Interactive TV you control – anywhere, any time, on any device. Prism™ TV replaces cable and satellite and is delivered to your neighborhood through CenturyLink's fiber-optic[†] network.

Prism™ TV offers interactive features like:



Wireless Set-Top Box

Put your TV anywhere you want – even in the backyard.

Additional fees required. Requires power and connection to TV; range of wireless signal is limited.



Whole Home DVR

Lets you watch and record multiple shows at once. Plus, pause live TV.



Prism on the Go

Watch TV anywhere you want, on any device you want. And set DVR recordings and access channels like HBO GO®, MAX GO®, NBC On Demand, Bravo On Demand, USA On Demand and more.



Prism App Center

The Prism App Center gives you access to social networks like Facebook, as well as Yahoo! Sports, Picasa and more.

Call 850.599.1005 Español 866.960.7085

Test-drive it in store:

Tallahassee – 1544-2 Governors Square Blvd

or online at **SeePrismTV.com** today!

**CenturyLink is proud to
serve Killearn Estates.**



CenturyLink® prism™

[†]Fiber optics apply to all or a significant amount of the network, depending on your location.

Services and offer not available everywhere. CenturyLink may change or cancel services or substitute similar services at its sole discretion without notice. Service and features are subject to change and may vary by service area. Requires credit approval and deposit may be required. Additional restrictions apply. **Terms and Conditions** – All products and services listed are governed by tariffs, terms of service, or terms and conditions posted at www.centurylink.com. **CenturyLink® Prism™ TV** – Subscription to Prism service is certain Prism territories may require a separate local phone service and preclude customers from purchasing High-Speed Internet services from any third party. Service includes digital channels (including local channels), one (1) or two (2) set-top boxes (STB), depending upon plan selected, one (1) modem gateway, and up to four (4) standard direct video streams to residence. CenturyLink-provided set-top boxes are required to view TV. Local channel availability varies by market. Wireless set-top box monthly fee applies for subscription to a Prism package that includes (1), requires power and connection to TV; range of wireless signal is limited. With Prism on the Go, most content can be viewed within your home only, requires a subscription to Prism and a qualifying device and Wi-Fi connection. **Prism Mobile App** – Requires subscription to a Prism TV Package. Most content (certain programs only) can be viewed within your home only. Other functionality can be used from anywhere. Download and watch available for select shows and requires qualifying device and Wi-Fi connection. Terms and conditions available at app store. **HBO GO® and MAX GO®** – HBO GO® and MAX GO® are only accessible in the U.S. and certain U.S. territories where a high speed broadband connection is available. Minimum 3G connection is required for viewing on mobile devices. Requires subscription to HBO and Cinemax. Other restrictions may apply. Terms and conditions apply. Additional charges will apply for additional programming packages, movie channel subscriptions (except for Prism Premium plan), Pay Per View movies and events, On Demand purchases, and premium services/subscription for all plans. © 2014 CenturyLink. All Rights Reserved. The name CenturyLink and the pathways logo are the trademarks of CenturyLink. All other marks are property of their respective owners.



TALLAHASSEE IRISH SOCIETY

ST. PATRICK'S FESTIVAL 2016 COME WALK WITH KILLEARN HOMES ASSOCIATION!

The Tallahassee Irish Society (TIS) has invited Killearn Estates to participate in their 7th Annual St. Patrick's Festival Parade Saturday, March 12, 2016, at The Centre of Tallahassee, the newly renovated Tallahassee Mall. TIS is the lead organization responsible for planning, organizing, and conducting the parade.



Prior to the parade which begins at 1pm, the 2nd Annual Shamrock Wheelchair Race, in partnership with the Florida Disabled Outdoors Association, will begin at 12 pm along a portion of the parade route.

The parade will begin at 1 pm with staging from 12 pm at the southwest corner of the parking area just outside what was previously the Gayfers Department Store (John Knox Road & Monroe Street). The parade route is through The Centre along an ADA-compliant cobblestone

avenue approximately 13 feet wide, easily accommodating vehicles as well as walking/marching units. Walking units will disperse at The Brickyard just outside the Entertainment Plaza and vehicles will proceed along the avenue to return to the staging area.

If you would like to join your Association in this St Paddy's Day event, please assemble at the staging area.

Following the parade, the St. Patrick's Festival from 2 pm to 8 pm will feature bands and Irish singers, dancers, and musicians as well as many activities, especially for children. In the Entertainment Plaza there will be booths for cultural and civic demonstrations along with lots of vendors for food, drinks, and beer.

Every child deserves some GIGGLES in their life!



Giggles
Indoor Play Center

NOW OPEN

3441 Bannerman Road
in Tallahassee



Parent Supervised Open Play
for kids aged 0-12 featuring

Jungle Gyms & Infant / Wobbler Areas
Play Structures for All Ages That Encourage Socialization
Parent Lounge, Birthday Parties & Fun & Educational Classes

Two Men at Work
HANDYMAN SERVICES THAT WORK FOR YOU

Woodrot Repair • Painting • Light Moving
Pressurewashing • Light Tree Removal • Debris Hauling
Plus Other Home Improvements

Jim Maples
(850) 545-8418 Licensed and Insured

JOHN PAUL BAILEY
& ASSOCIATES

Licensed Real Estate Broker
Commercial Real Estate

103 S. Adams St.
Tallahassee, FL 32301

Cell: (850) 933-0761
jpbassociates@aol.com

SAVE ON AN UPCOMING EVENT AT THE DONALD L. TUCKER CIVIC CENTER!

TALLAHASSEE BROADWAY SERIES
 PRESENTED BY **ON** OPENING NIGHTS



THE ILLUSIONISTS
LIVE FROM BROADWAY

MARCH 10, 2016



Once

APRIL 7, 2016



Once

APRIL 28, 2016

USE CODE: KHA
BOOK YOUR TICKETS TODAY!
CALL 850-583-4871
ONLINE AT WWW.TUCKERCIVICCENTER.COM
IN PERSON AT THE CIVIC CENTER BOX OFFICE

*CODE EXPIRES 10PM DAY BEFORE EVENT. ADDITIONAL FEES MAY APPLY.

Donald L. Tucker Civic Center
FLORIDA STATE UNIVERSITY



**Need a new roof?
Stop leaks now!**

**Reroofs • Repairs • Gutters
Residential • Commercial • Maintenance**

536-3149
Quality You Can Depend On ... Call Now!

SMITH
ROOFING & REPAIR
CERTIFIED ROOFING CONTRACTOR



www.smithroofingandrepair.com
Serving Tallahassee since 1977

Licensed & Insured #CC1326753

**Advertise
Your Business
850/893-3468**



Jim Ashlock elected to NEBA Board

Congratulations to longtime Killlearn Homes and former board member Jim Ashlock for his election to the Board of Directors of NEBA, the Network of Entrepreneurs and Business Advocates. NEBA is a diverse group of more than 200 business professionals committed to promoting commerce and advocating for local business interests with state and local governments.





Gerard LaMothe, Jr.
 Office: (850) 297-1882 Fax: (850) 297-0084
 office@superiorpainting.net www.superiorpainting.net

EXPECT THE BEST
 Interior and Exterior Painting,
 Cabinet Painting,
 Deck and Fence Staining, Drywall Repair,
 Crown Molding/Chair Rail Installation,
 Wood Rot Repair,
 Faux Finishing, Concrete Staining.
Call us: (850) 297-1882



by Sue Barlow

Renew or Join Now for Savings!

Beat the Heat at the Killearn Estates Swim Club

It's hard to imagine that the weather these days will warm up enough to enjoy the Killearn Estates Swim Club pool, but those who have lived here long enough know the steamy heat Tallahassee residents endure during the summer months.

The Killearn Estates Swim Club will reopen on April 30th, 2016 at 11 am, and will remain open through October 2nd, 2016. The resident membership fee for the full season will remain at last year's rate of \$450. However, for Killearn residents only, if you join or renew early and pay in full by April 1st, 2016, you will receive a reduced rate of \$400.00 for the entire season. After April 1st, the resident rates will be as follows:



\$450.00 entire season if paid May 1st

\$425.00 if starting June 1st

\$375.00 if starting July 1st

\$325.00 if starting August 1st

\$175 if starting September 1st



Although we don't offer a month to month membership, the longer you wait to join, the more it will cost you monthly for the remaining months.

If you were a member last year and want to take advantage of this April 1st special rate, please mail your check, or drop it off, payable to KHA at 2705 Killarney Way...be sure to put your membership number on your check.

By the way, use of the 3.4 acre park area and tennis courts will be open to all Killearn Estates members, free of charge, just like the 9 parks, bridle trails, lakes and common areas are in the community.

Name: _____ Email: _____

Address: _____ Home Phone: _____

Daytime Phone/Cell: _____ Employer: _____

Name of Spouse: _____

Names and ages of Children:

_____ Age: _____ _____ Age: _____

_____ Age: _____ _____ Age: _____

I/we understand that our membership is seasonal for swimming. The membership fees are due and payable regardless of weather conditions or pool usage. I/we agree to abide by all of the rules and regulations of the Killearn Swim Club and further agree to not hold the Killearn Swim Club employees, representatives, membership or board members responsible for accidental injury.

Dated: _____

Applicant

Applicant's Spouse

KILLEARN HOMES ASSOCIATION, INC.

2705 Killarney Way • Tallahassee, Florida 32309 • Telephone 850.893.3468 • Fax 850.668.0530

Architectural Control Committee Actions for January, 2016

The Committee meets every Wednesday at 10am in the Killlearn Homes Association conference room.

DATE	UNIT	PROJECT	ACTION/CONDITIONS
1/6/2016	41	In-ground Pool with Enclosure	Approved
	18	Install wooden privacy fence	Approved
	03	Roof replacement (Charcoal)	Approved
	03	Install playset	Approved
	41	Roof replacement (Slate Gray)	Approved
	40	Roof replacement (Reddish Brown)	Approved
	39	Install wooden privacy fencing	Approved
	06	Install wooden privacy fencing & rain gutters	Approved
	42	Repaint home	Approved
	35	Roof replacement (Weathered Wood)	Approved
1/13/2016	12	Install screened porch and new patio slab	Approved
	38	Repaint home & trim	Approved
	07	Install privacy fencing & storage structure	Approved
	42	Replace privacy fencing	Approved
	17	Install 4' picket fencing	Approved
1/20/2016	11	Install metal standalone carport	Denied
		Appealed to board and denial upheld 2/2/2016	
	14	Roof replacement	Approved
	10	Install rear fencing	Approved
	26	Replace windows	Approved
	29	Roof replacement (Brownwood)	Approved
1/27/2016	11	Replace windows	Approved
	04	Roof replacement (Estate Gray)	Approved
	10	Install 6' privacy fencing	Approved
	38	Remove dying pine tree in backyard	Approved

ACC MEMBERS: CHAIRMAN MICHAEL FLEMMING, MARK TRUDEAU, LEE JOHNSON, JOHN PAUL BAILEY, POLLY JOHNSON, DAVID FERGUSON. ALL EXTERIOR ADDITIONS OR ALTERATIONS MUST BE APPROVED BY THE ACC PRIOR TO CONSTRUCTION.



Lead The Way
Dog Walking & Pet Sitting Services

Diane Mohamete
Bonded and Insured

2835 Fitzpatrick Drive
Tallahassee, FL 32309

dmohamete@embarqmail.com
850-321-4033



Pool Cleaning
556-6263

Only \$150 a month
chemicals included

A Precision Pressure Washing
& Pool Services Inc.

Licensed & Insured

Annsworth Academy

Toddlers, Preschool, Prekindergarten

- From 7 a.m. to 6 p.m.
- Fun filled learning program
- Credentialed teachers
- Prepares children for future success

Parents and Children Love Annsworth Academy

Call today for a tour!

TOP PERFORMING VPK PROVIDER

www.Annsworth.com
2919 Kerry Forest Parkway

668-9072

Lic. #C02 LE0222

NAEYC
Accredited



City Nails
(Located next to Stein Mart)
1400 Village Square Blvd. Ste #30
Acrylic • Solar • Pink & White • Spa Manicure
Professional Nail Care for Ladies & Gentlemen
668-8818
Mon - Sun 10 am - 7 pm
Gift Certificates Available
Appointment & Walk-ins Welcome

Bowles ROOFING
Re-Roofs & Repairs
Roof Maintenance
(850) 575-6060
Lic. # CC-C058119 • Insured
25+ Years in Business • A+ Rating from BBB
www.ROOFERSTALLAHASSEEFL.COM

Exceeding Expectations



Best Heating & Air Conditioning Company



Benson's is Best for
Your Home & Business.
Our Servant Attitude
Proves We're Best for
Our Community...



Service is
Always Available

850-562-3132

Office Hours: Mon-Fri: 8am-8pm & Sat: 8am-4pm

Financing Available All Credit Cards Welcome

FL: CMC056269 | GA: CN208982



www.BensonsHVAC.com



Michael Flemming, Owner
Painting Contractor
State Certified Building Contractor
State Certified Home Inspector
FL Lic# CBC1256612
FL Lic# HI4590



Southeast Painting inc.
SINCE 1984

A Company You Can Trust

When It Needs To Be Done Right

Residential & Commercial Painting • Cabinets • Carpentry • Interior-Exterior

Fully Licensed, Insured & Background Checked
Expert Color Matching • All Work Guaranteed

www.southeastpaint.com

562-4010

References • Free Estimates • See Our Ad in Yellow Pages



Ask us about
going GREEN!

LOST AND FOUND

If you lost an antique pocket knife in the Beaumont Drive area, it was found on February 8, 2016.

Please contact the office at 893-3468 so we can put you in touch with the resident who found it.

St. George Walk In Clinic



Samia Kozman, MD

2709 Killarney Way, Unit 3
Tallahassee, FL 32309

Phone: 850-999-8865 Fax: 850-999-8866
Medicare, Medicaid, Cigna, Wellcare,
Humana, Tricare and cash are welcome!

Pressure Washing Soft Washing Window Cleaning Gutter Cleaning Dryer Vent Cleaning



15% off

Your Service Total

Call today for a free estimate:

850-559-5229

TharpeExteriorCleaning.com

PROUD MEMBER OF
THE CHAMBER



Ready, Set, Go!

The Shamrock Scurry, one of Tallahassee's oldest races, is back at Killearn United Methodist Church, where it all started in 1981. The Five-Kilometer and One

Mile Fun Run/Walk will be held at KUMC on March 12, 2016. As always, most of the original course will be followed, including the famed "Scurry Hill" around mile two. The course will begin on Shamrock and will feature a scenic route of residential areas and a golf course.

All proceeds from the race, and popular Pancake Breakfast afterwards, will benefit local, national and international missions programs supported by KUMC. This "Race for Hunger" benefits programs such as Twelve Churches, KUMC Food Bank, The Living Harvest, Meals on Wheels, Frenchtown Breakfast, The United Methodist Children's Home and more.

Local CHURCH TEAMS are encouraged! The local

Tallahassee church with the most Scurry participants will receive \$500 for their missions program.

Registration options range between \$10 and \$25. Registration may be completed online at shamrock-scurry.com, or printed and turned in to the KUMC Main Office.

Packet Pick-up: March 10, 4pm-7pm and March 11, 11am-2pm

Awards for the 5K will be given to the top male and female overall finishers and the top 3 males and females in 5-year age groups. Awards for the 1 Mile Fun Run/Walk will be given to the top 3 male and female finishers.

Sponsorship opportunities are still available for corporate and business partners.

TALLAHASSEE WOMEN'S NEWCOMERS CLUB



Tallahassee Women's Newcomers Club (TWNC) is one of those groups that boost Tallahassee's "WOW" Factor, a friendly haven for mature women who usually seek out this very social club because they are experiencing something new to their lives.

Members can choose from monthly events (examples include a luncheon, coffee, and happy hour) and a plethora of breakout groups (examples include book clubs, Bridge, Hand and Foot, Bunco, Mahjongg, Pinochle, Southern Living Cooking Club, and Chick Flicks). Members also occasionally indulge in day trips, overnight adventures, and local events. Just use our email us at tallahasseenewcomers@gmail.com!

Bradfordville Senior Outreach Classes Have a New Location

As a community public service announcement, Killearn Homes Association is providing the following information released by the City of Tallahassee.

All Leon County Senior Outreach classes activities (except the Bradfordville Lunch and Learn) are now taking place in meeting room 103 of Leon County's Northeast Branch Library, 5513 Thomasville Rd.

The library's meeting room is large enough to accommodate most of the classes offered. There is a lot of natural lighting and the newly refinished floors are perfect for fitness classes. The library offers audio-visual equipment that enhances LifeLong Learning presentations, as well as Wi-Fi connections to help participants connect to the Internet. Parking is plentiful and close to the building. Class participants will also have access to the library's treasures during the hours the library is open.

The Bradfordville Lunch and Learn will still be held at Wildwood Presbyterian Fellowship Hall, 100 Ox Bottom Road. Leon County Senior Outreach is a program of the Tallahassee Senior Center and Foundation. For more information, contact Susan Davis, Leon County Senior Outreach Coordinator, at 891-4065. **To stay updated on activities throughout the city, you can sign up to receive their news releases via email, along with many other features, by going to their online email subscription page at www.411notify.com/tallahassee.**

THE LIVING HARVEST THRIFT & BOUTIQUE STORE



We offer gently used clothing for men, women, and children, furniture, appliances, decorator items, new mattresses, and we even have a boutique of higher end and designer clothing. **The hours are Monday through Friday from 10:00 to 6:00, Saturday from 10:00 to 2:00.** Donations are accepted during that time, as well. If you need pick-up for donations of larger items such as furniture, please call the store at **850-765-6285**. The Living Harvest is a non-profit Christian organization with proceeds going to assist recently released incarcerated persons back into the community.

To support The Living Harvest please stop in and visit the store at 4500 W. Shannon Lakes Drive in the Four Oaks Plaza.

March IN the Tallahassee Garden

March is one of the favorite gardening times of year. The weather is warm, the soil is warming and the nurseries and garden centers are full of plants. But March is also one of the most dangerous times of year. Our average annual last frost date is March 15, but some years we experience killing frosts as late as the end of March or early April. So some gardening activities must be put off until April, such as planting tender summer annual flowers, like impatiens and begonias. However, a long list of other gardening activities sounds the call to action.

PLANTING - Trees and shrubs can still be planted, but the sooner the better. The roots need time to become established before suffering the stress of hot summer months. Select spring-flowering trees and shrubs now while they are in bloom and you can see just what you are getting in terms of color and shape. Knowledgeable people at our nurseries and garden centers can help you select plants suited to our area.

PRUNING - Now is the time to finish heavy pruning of trees and shrubs. Delay pruning spring-flowering shrubs, such as loropetalum, until they finish blooming. Then prune without delay to avoid pruning away next year's blooms. Be patient with shrubs which appear cold-damaged. Once new growth appears you will see how much actually needs pruning. Even shrubs which appear totally dead may grow back from the crown. Older, overgrown woody shrubs such as tea olive, hollies and ligustrum can be rejuvenated by cutting them to within a foot or two of the ground and allowing them to grow back.

FERTILIZATION - Resist fertilizing your lawn until April, at least three weeks after green-up. Otherwise it will be a waste of time and money. Or you may decide you don't need to fertilize it at all. If your lawn was healthy and presentable last year, then good watering and mowing practices can help keep it healthy. Fertilize young trees and shrubs now. Established trees and shrubs in mulched beds need little fertilization. A soil test can help you decide.

LAWN CARE - Sharpen your mower blades now, and then check your lawn throughout the mowing season to determine when you need to re-sharpen the blades. A dull blade makes a ragged cut which will stress the grass. If your grass blades look chewed off after your lawn care service mows, ask them to sharpen their blades. Mow at least every 2 weeks to keep winter weeds from spreading. If you

over-seeded your lawn with winter rye, cut it very close so that sun can reach the permanent grass.

VEGETABLE GARDEN - In

the vegetable garden the race is on! Local gardeners try to plant the summer vegetable garden as soon as danger of frost has passed in order to harvest the produce before the summer insects and diseases take over. After March 15, in full sun and well-drained soil, begin planting beans, melons, sweet corn, cucumbers, eggplant, southern peas, peppers, squash and tomatoes.

For more local gardening information, visit the UF-IFAS Extension website for Leon County at <http://leon.ifas.ufl.edu> Reprinted with the permission of the University of Florida IFAS Extension in Leon County.





850-556-9183

Whit Davis
whit.davisgreenscapes@gmail.com

Mowing
Mulching
Pruning
Sodding
Aeration
Planting
Fertilization
Pressure Wash
Weed Control in Beds

Call today for a no cost, no obligation estimate

Aging-In-Place **REMODELING** made EASY by



Mark Worley, President, GMB, CAPS

850.668.3438 WorleyConstructionInc.com

Killearn Homes Association, Inc.
Profit & Loss Prev Year Comparison
January 1 through February 19, 2016

	Jan 1 - Feb 19, 16	Jan 1 - Feb 19, 15
Ordinary Income/Expense		
Income		
6010 · INCOME-CURRENT DUES	289,228.62	367,097.54
6013 · INCOME-LATE FEES	1,073.70	746.68
6015 · INCOME-PRIOR DUES	492.02	957.57
6017 · ESTOPPEL	1,538.46	900.00
6020 · DELINQUENT ACCT-Maintenance	138.63	21.49
6021 · DELINQUENT ACCT-INTER.	14.83	61.61
6022 · COLL. FEES-LEGAL	1,500.43	1,717.85
6024 · ADMIN. NOTICING COST	39.93	35.02
6033 · INCOME-ADVERTISING	11,081.24	2,497.50
6055 · CENTURYLINK COMMISSION	6,282.58	4,632.87
6830 · INCOME-INTEREST	17.03	14.69
Total Income	311,407.47	378,682.82
Gross Profit	311,407.47	378,682.82
Expense		
6560 · PAYROLL TAXES	2,015.63	2,635.38
6950 · MAINTENANCE	900.00	500.00
7050 · LAKES	2,000.00	900.00
7100 · GROUNDS	9,551.60	13,204.60
7110 · ADDITIONAL GROUNDS SERV.	783.00	3,210.00
7120 · REPAIRS	358.97	1,312.00
7270 · UTILITIES-COMMON AREAS	502.25	536.72
7271 · ASSN. CENTER - UTILITIES	592.17	568.77
7272 · CLEANING SERVICE	500.00	500.00
7335 · KE SWIM CLUB - UTILITIES	182.32	78.55
7610 · PLAYGROUND/PARK IMPROVEMENTS	4,640.30	0.00
8050 · NEWSLETTER	8,283.25	9,245.02
8170 · OTHER	201.25	329.19
8410 · MEMBERS STATEMENT	1,823.19	5,673.28
8420 · LEGAL & PROF. FEES	7,231.53	21,816.73
8580 · PAYROLL-SALARIES	23,725.35	19,824.67
8640 · ACCOUNTING/AUDITING	0.00	205.00
8645 · WEBSITE	62.50	918.98
8680 · AUTO EXPENSES-GENERAL	200.68	233.90
8730 · MISC. ADMIN. EXPENSE	2,234.06	289.08
8750 · EVENTS	939.17	0.00
8782 · INSURANCE - WORKER'S COMP	812.00	0.00
8785 · INSURANCE-HEALTH	0.00	1,286.00
8821 · LIEN FILING FEE	20.00	20.00
8850 · POSTAGE	110.96	2,126.18
8870 · PRINTING - COPY MACHINE	589.81	533.04
8940 · SUPPLIES-OFFICE	385.14	456.61
9500 · TELEPHONE	503.37	505.65
9880 · FEDERAL INCOME TAX	4,160.00	0.00
Total Expense	73,308.50	86,909.35
Net Ordinary Income	238,098.97	291,773.47
Net Income	238,098.97	291,773.47

*Beautiful
Memories
Deserve to be
made in
Beautiful Spaces*

Landscapes
Paver Patios
Walkways
Pergolas

Retaining Walls
Sitting Areas
Water Features
Outdoor Kitchens


THE PLANT MAN
LANDSCAPE & DESIGN

(850) 997-1008

plantmanlandscapedesign.com